

MODEL NUMBER		EB-972	EB-982W	
Projection Technology		RGB liquid crystal shutter projection system (3LCD)		
Specifications of Main Parts				
LCD	Size	0.55" (C2fine)	0.59" (C2fine)	
	Native Resolution	XGA	WXGA	
Lightsource	Type	230W UHE		
	Life (Normal / Eco)	6,500 / 17,000 hours		
Aspect Ratio		4:3	16:10	
Projection Lens	Type	Optical Zoom (Manual) / Focus (Manual)		
	F-Number	1.51 – 1.99		
	Focal Length	18.20 – 29.20 mm		
	Zoom Ratio	1 – 1.6		
	Throw Ratio	1.58 – 2.56 (Wide to Tele)	1.38 – 2.24 (Wide to Tele)	
	Screen Size (Projected Distance)			
Standard	Tele: 27" to 262" [1.40 to 13.81 m]	Tele: 29" to 280" [1.40 to 13.71 m]		
	Wide: 27" to 262" [0.85 to 8.52 m]	Wide: 29" to 280" [0.85 to 8.45 m]		
Brightness¹				
White Light Output (Normal / Extended)	4,100 lm	4,200 lm		
	Colour Light Output	4,100 lm		
Contrast Ratio	16,000:1			
Geometric Correction				
Vertical / Horizontal Keystone	±30° / ±30° (Auto Vertical Keystone only)			
Quick Corner	Yes			
Split Screen	Yes			
Internal Speakers				
Monoaural: 16W x 1				
Connectivity				
Analog Input	D-Sub 15Pin	2		
	Composite	1 (RCA)		
Digital Input	DVI-D	NA		
	HDMI	2		
	HDBaseT	NA		
Output Terminal	D-Sub 15Pin	1		
	HDMI	NA		
Audio Input	2RCA (White & Red)	1		
	Stereo Mini	2		
Audio Output	Stereo Mini Jack	1		
	Others	USB Type A 1 (for Wireless LAN, Firmware Update, Copy OSD Settings) USB Type B 1 (for Firmware Update, Copy OSD Settings)		
Mic Input	Stereo Mini	1		
	Control I/O	RS-232C 1 Remote Control Input NA		
Network	Wired LAN	1		
	Wireless	1 (ELPAP11)		
Wireless Specification				
Supported Speed For Each Mode	IEEE 802.11b (2.4GHz): 11 Mbps ² / IEEE 802.11g (2.4GHz): 54 Mbps ² / IEEE 802.11n (2.4GHz): 72.2 Mbps ² / IEEE 802.11a (5GHz): 54 Mbps ² / IEEE 802.11n (5GHz): 150 Mbps ²			
Wireless LAN Security	Infrastructure: OPEN, WPA2/WPA3-PSK			
	Access Point: OPEN, WPA2-PSK (AES)			
Operating Temperature				
Low Altitude: 5 – 40 °C <41 – 104 °F> High Altitude: 5 – 35 °C <41 – 95 °F> (20% – 80% Humidity, No Condensation)				
Operating Altitude				
0 – 3,048 m <0 – 10,000 ft>				
Direct Power On / Off				
Yes				
Start-Up Period				
Up to 6 seconds, Warm-up Period: 30 seconds				
Cool Down Period				
Instant Off				
Air Filter				
Type	High Efficiency Filter			
Maintenance Cycle (Normal / Eco)	10,000 / 20,000 hours ³			
Power Supply Voltage				
100 – 240 V AC ±10%, 50/60 Hz				
Power Consumption (220 - 240V)				
Lamp (Normal / Medium / Eco)	327W / 290W / 225W			
Standby (Network / Energy Saving)	2.0W / 0.3W			
Dimension Excluding Feet (D X W X H)				
282 x 309 x 90 mm				
Weight (Including Standard Lens)				
Approx. 3.1 kg				
Fan Noise (Normal / Quiet)				
37dB / 28dB				

¹ Colour brightness (colour light output) and white brightness (white light output) will vary depending on usage conditions. Colour light output measured in accordance with IDMS 15:4; white light output measured in accordance with ISO 21118.
² Maximum speed and range is achievable when used with same enhanced mode technology. Actual data rates, features and performance may vary depending on your computer system, the environment and other factors.
³ When used in the general office environment (the amount of floating dust: 0.04 - 0.2 mg/m³). Based on the Epson's in-house test results.

EB-972/982W

Supplied Accessories
Power Cable (1.8m)
Connection Cable (1.8m)
Remote control with 2AA Battery
User's Manual CDROM
Quick Start Guide

Optional Accessories
Spare Lamp: ELPLP97
Air Filter: ELPAF54
Wireless LAN Card + Cover: ELPAP11
Ceiling Mount: ELPMB23
Carry Case: ELPKS70



EB-972



EB-982W

©2021 Epson Singapore Pte Ltd. All Rights Reserved. Reproduction in part or in whole, without the written permission from Epson, is strictly prohibited.

EPSON and EXCEED YOUR VISION are registered trademarks of Seiko Epson Corporation.

All other product names and other company names used herein are for identification purposes only and are the trademarks or registered trademarks of their respective owners.

Epson disclaims any and all rights in those marks. Projected images shown herein are simulations. The actual product design and contents may vary. Specifications are subject to change without notice and may vary between countries. Please check with local Epson offices for more information.

Apple, iPad and iPhone are trademarks of Apple Inc., registered in the U.S. and other countries. App Store is a service mark of Apple Inc.

Android is a trademark of Google Inc.

Dealer's Stamp

Information correct at time of printing.
Printed February 2021



Get the most value for your money with Epson business projectors! These projectors are designed to be your choice regardless if they are used in a corporate setting or in the educational field. With your convenience in mind, you can now project your content wirelessly¹ from compatible smart devices without any additional software installation. Now you are able to showcase your content crisp and clear on large screens.

- 12,000 Hours Lamp Life in Eco Mode²
- Split Screen
- Auto Vertical Keystone
- Horizontal Keystone Slider³
- iProjection
- Cost Effective



IT'S IN THE DETAILS.
3LCD technology that delivers quality projected images and reliable performance.

¹ For selected models only. ² Up to 17,000 hours lamp life in Eco Mode for EB-972 & EB-982W. ³ Except EB-E01.



Full HD 1080p Resolution EB-FH52 only

Displaying clear and crisp visuals thanks to its Full HD 1080p format, the Epson EB-FH52's high resolution is able to support vivid display on large screen sizes. Improved connectivity ensures smooth communication between your smart devices and the projector, making presentations hassle-free.

Compared to the normal SVGA resolution, Epson EB-FH52's Full HD 1080p resolution is your answer to clearer text and sharper, more detailed images.

Visuals remain razor-sharp on Full HD 1080p resolution.

Full HD 1080p
Resolution
1920 x 1080

Sharper Images

SVGA
Resolution
800 x 600

Pixelated Images

Clearer Text **VS** Blurry Text

Content is better shared without distortion and any loss on 1080p resolution.

SVGA
XGA
WXGA
Full HD
PC Source

Screen Mirroring with Miracast®

Miracast support makes it easy to connect smart devices or laptops to a projector. This feature can be used without additional options or the installation of an application for wireless connection. Quick wireless connection makes the presentation smart and eliminates annoying cabling.



Miracast® is a registered trademark of Wi-Fi Alliance®.

WPA2/WPA3-Enterprise EB-FH52 only

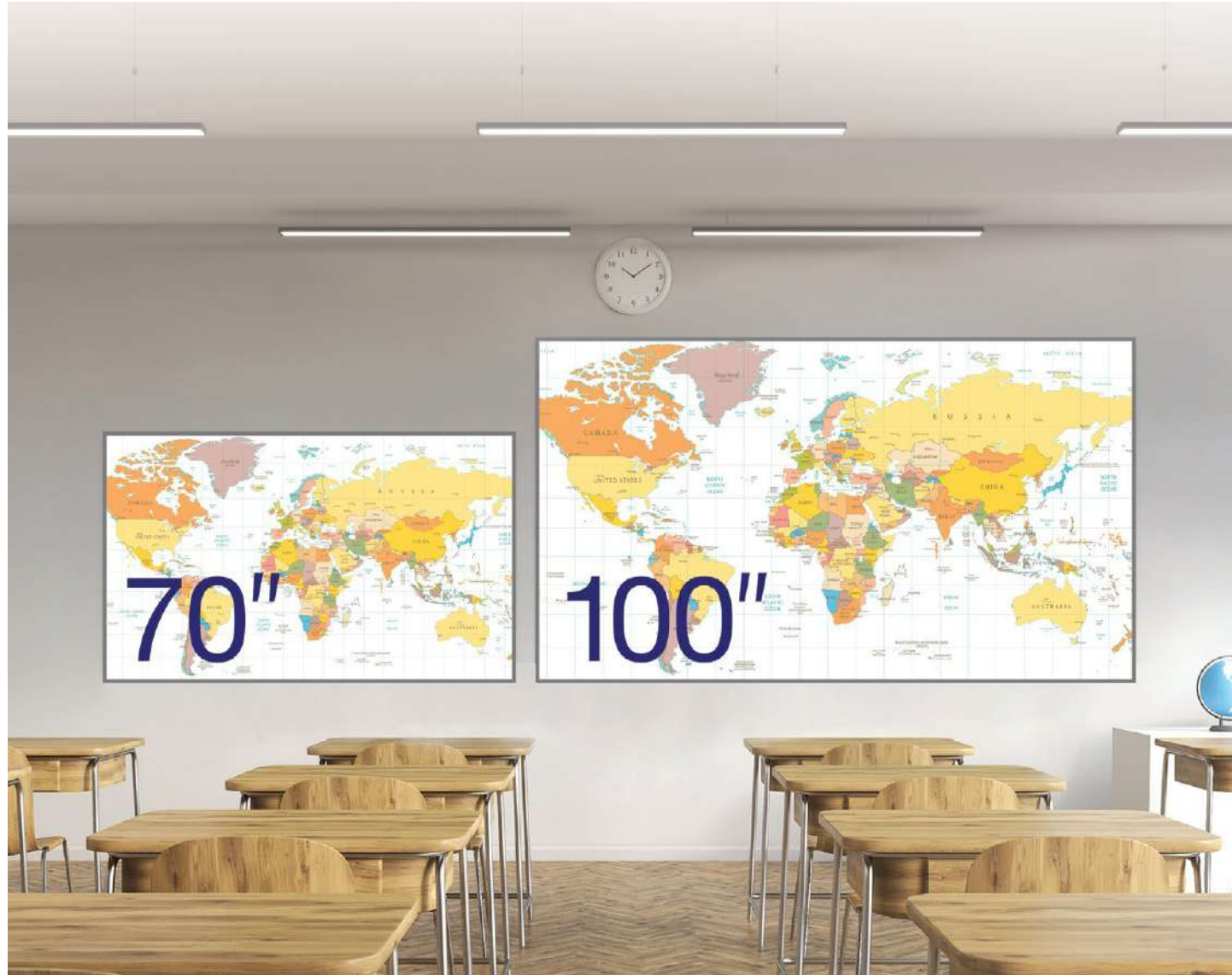
WPA2/WPA3-Enterprise provides a safe method of wireless connectivity so that projectors can connect to a business environment over a secure wireless network.



Crystal Clear Resolution to aid your Professional Presentations.

With Epson EB-FH52 Full-HD 3LCD projector, rest assured that you will be delivering captivating presentations complete with sharper text and richer images. This high-resolution projector comes with advanced features and better connectivity, making it the ideal partner for both the corporate and education sectors.





How can a projector with better resolution aid your presentation?

Epson Business Projectors	Other SVGA Projectors
<p>Resolution: WXGA 1280 x 800 XGA 1024 x 768</p>	<p>Resolution: SVGA 800 x 600</p>
<ul style="list-style-type: none"> ✓ Sharper text and vivid images ✓ Includes more information on the screen ✓ Better audience engagement 	<ul style="list-style-type: none"> ✗ Blurry images with less legible text ✗ Less information allowed on the screen ✗ Dull and challenging viewing experience

Split Screen Function for Wired / Non-wired Devices

A split screen function enables the simultaneous projection of two images from separate devices through both wired and wireless connections on a single screen, eliminating the need for a second projector. Classroom lessons and business meetings can now be more engaging by connecting the projector with a document camera and a PC or tablet.



Larger, Sharper, More Impactful Viewing Experience.

Project at various screen sizes thanks to its flexible screen size ability, these affordable and easy-to-maintain Epson business projectors enable you to give an impactful presentation both in a classroom and a meeting room setting. The razor-sharp and clear visuals allow your audience to enjoy a stress-free viewing even from a distance.



EB-E01

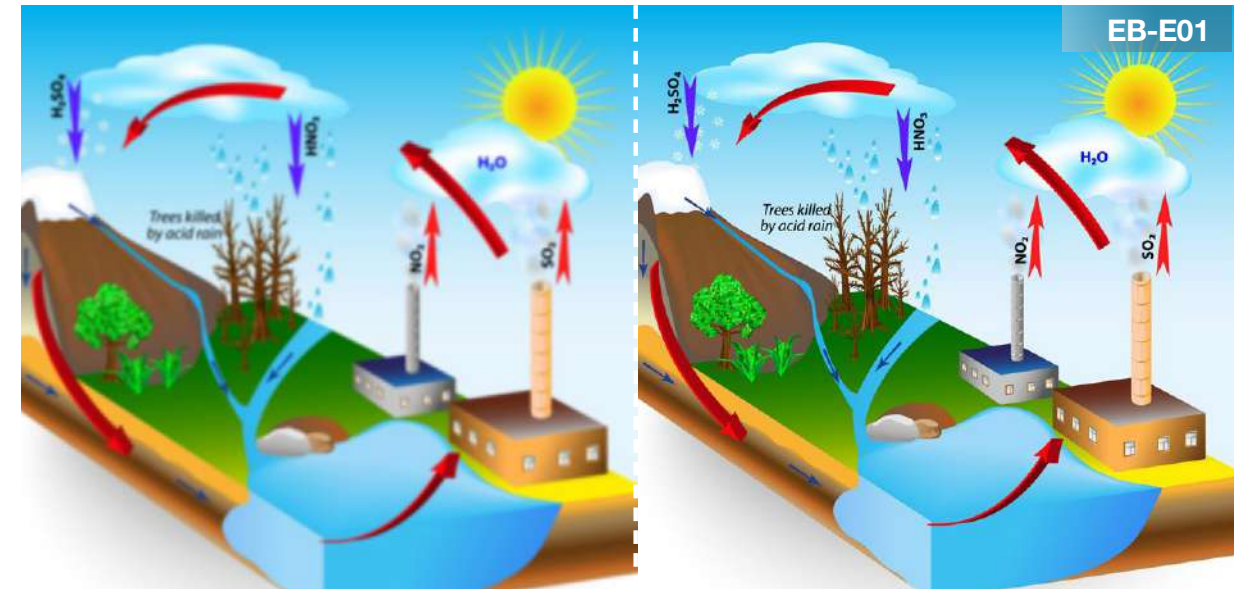


EB-X51/W51



Compelling Projection

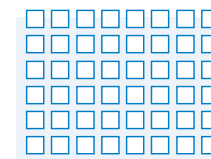
Bring images to life in the classroom with Epson's XGA resolution projectors. Projecting up to 3,600 lm brightness, you can now present your materials to the class with brighter pictures in better colours and contrasts. Leave a more convincing and stronger presentation to your peers and students with Epson's projectors today.



XGA Resolution

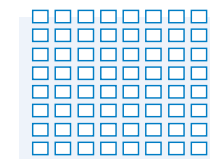


SVGA Resolution
800 x 600



Loss of details

XGA Resolution
1024 x 768



Sharper, detailed images



Enhance the Classroom Experience
with **Expressive Projections**

Engage the young minds with expressive and vivid projections in class with Epson's XGA projectors. The outstanding flexibility and portability makes it easy for you to install it anywhere in the classroom without additional hassle. Now you can capture and retain students attention to achieve maximum concentration.



EB-E01

Easy Maintenance and Longer Lamp Life

A long lamp life reduces maintenance and costs. The lamp will last up to 12,000 hours in ECO mode. Cut down on the frequency of lamp replacements, saving you time and money, and lowering the total cost of ownership.



Various Interfaces

Epson business projectors support a wide range of connectivity options including HDMI, VGA, and USB. These interfaces support connections to both the latest digital devices as well as the existing legacy of analogue products without the need for adaptors.



Lens Shutter

The lens shutter can be used to quickly stop and start projection without actually turning power off and on.

This feature temporarily blocks an image projected onto a whiteboard, allowing the whiteboard to be used.



Up to Four Screens at once with iProjection

Use the Epson iProjection* app to simultaneously share and control content wirelessly from up to four connected devices.



* Epson iProjection eliminates the need for annoying cabling by transferring still images and supported files from smart devices to projectors, for smooth wireless projection.



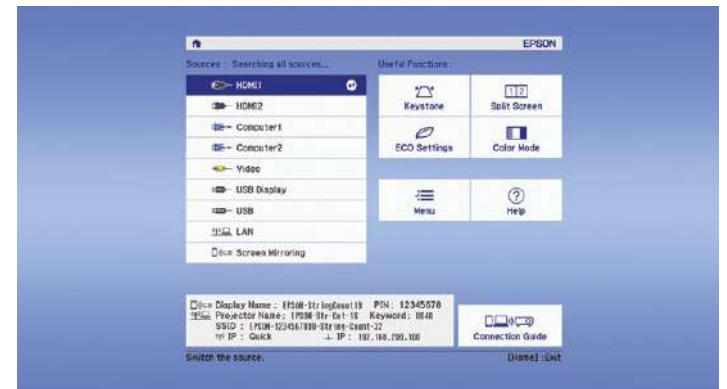
Easy to Carry

The projector's compact body makes it easy to carry from one room to another.



Home Screen

The home screen offers quick access to frequently used functions. Connected interfaces can be recognised at a glance and switched instantaneously. The information needed when setting up a wireless connection is projected on-screen, making connection fast and easy.



Auto Power On

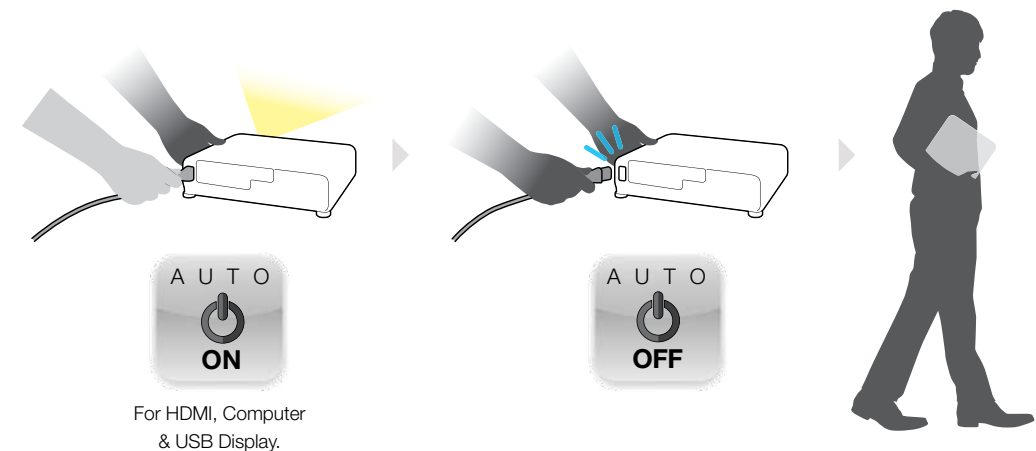
For HDMI, Computer & USB Display

This feature can be used to automatically power up a projector when the projector is connected by cable to a device such as PC, saving setup time.



Direct Power Off

Simply unplug the power cable to turn off the projector after use and speed up clean-up after meetings and lessons.



PROTECT YOUR PROJECTOR. USE GENUINE LAMPS.



Don't compromise on safety – use Epson genuine lamps to avoid damaging your projector. Eliminate the risk of melting parts of your projector, as well as breaks that result in high-voltage shutdown. With a 0% failure rate even after 2,000 hours of usage – compared to 70% in non-genuine lamps – Epson genuine lamps are safer and more reliable. Choose the best possible viewing experience filled with long-lasting sharpness and colour in every projected image with Epson.

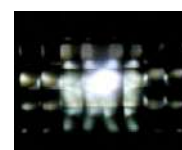
DANGERS OF NON-GENUINE LAMPS



UNRELIABLE
Counterfeit lamps deteriorate and break much faster than genuine ones.



UNSAFE
Parts of your Epson projector such as the housing or wires may melt, disconnect, or become damaged when using non-genuine lamps.



POOR IMAGE QUALITY
Counterfeit lamps may result in inaccurate colour projection, lower brightness levels, as well as flickering images that spoil your viewing experience.



GENUINE EPSON LABEL

To ensure the best quality and safety when using your Epson Projector, look for the "Genuine EPSON Colour Shifting Label" on your projector lamp. Real quality and value, only with Epson genuine supplies.

www.epson.com.sg/projectorlamp

PROJECTOR WISHES COME TRUE.

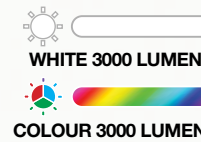
EPSON 3LCD PROJECTORS

1-CHIP PROJECTORS



Up to **3x**
Brighter
Colours
with
Epson Projectors

**TRUE
BRIGHTNESS**



**NO
RAINBOW
EFFECT**

**TRUE
COMFORT**



**EX WIDER
COLOUR GAMUT
Epson Projectors**

**TRUE
REALISM**



TRUE COLOURS

Brighter, vivid projection from Epson.

9 out of 10
PEOPLE
PREFER
IMAGES FROM
EPSON
PROJECTORS



IT'S IN THE DETAILS.

With 3LCD panels, every projection gives you spectacular true colours.

Find out more at www.epson.com.sg/truocolours

* Leading Epson business and education projectors vs. leading 1-chip DLP projectors, selected according to NPD data as of July 2015. Based on U.S. research conducted by Radius Research.
**These lumen statistics can be found at www.colorlightoutput.com.

SPECIFICATIONS EB-E01

MODEL NUMBER		EB-E01
Projection Technology		RGB liquid crystal shutter projection system (3LCD)
Specifications of Main Parts		
LCD	Size	0.55" (C2fine)
	Native Resolution	XGA (1024 x 768)
Lightsource	Type	210W UHE
	Life (Normal / Eco)	6,000 / 12,000 hours
Aspect Ratio		4:3
Projection Lens		
	Type	No Optical Zoom / Focus (Manual)
	F-Number	1.44
	Focal Length	16.70 mm
	Zoom Ratio	1.00 – 1.35 (Digital Zoom)
	Throw Ratio	1.44 - 1.95 (Wide to Tele)
Screen Size (Projected Distance)		
Standard		Tele: 22" to 259" [0.87 to 10.34 m] Wide: 30" to 350" [0.87 to 10.34 m]
Brightness¹		
White Light Output (Normal / Extended)		3,300 lm
Colour Light Output		3,300 lm
Contrast Ratio		15,000:1
Geometric Correction		
Vertical / Horizontal Keystone		±30° / ±30°
Quick Corner		Yes
Split Screen		Yes
Internal Speakers		Monoaural: 2W x 1
Connectivity		
Analog Input	D-Sub 15Pin	1
	Composite	NA
Digital Input	DVI-D	NA
	HDMI	1
	HDBaseT	NA
Output Terminal	D-Sub 15Pin	NA
	HDMI	NA
Audio Input	2RCA	NA
Audio Output	Stereo Mini Jack	NA
Others	USB Type A	NA
	USB Type B	1 (For Firmware Update, Copy OSD Settings)
Control I/O	RS-232C	NA
	Remote Control Input	NA
Network	Wired LAN	NA
	Wireless	NA
Operating Temperature		Low Altitude: 5 – 40 °C <41 – 104 °F> High Altitude: 5 – 35 °C <41 – 95 °F> (20% – 80% Humidity, No Condensation)
Operating Altitude		0 – 3,048 m <0 – 10,000 ft>
Direct Power On / Off		Yes
Start-Up Period		Up to 6 seconds, Warm-up Period: 30 seconds
Cool Down Period		Instant Off
Air Filter		
Type		High Efficiency Filter
Maintenance Cycle (Normal / Eco)		6,000 / 12,000 hours ²
Power Supply Voltage		100 - 240 V AC ±10%, 50/60 Hz
Power Consumption (220 - 240V)		
Lamp (Normal / Eco)		327W / 225W
Standby (Energy Saving)		0.3 W
Dimension Excluding Feet (D X W X H)		234 x 302 x 77 mm
Weight (Including Standard Lens)		Approx. 2.4 kg
Fan Noise (Normal / Quiet)		37dB / 28dB

¹ Colour brightness (colour light output) and white brightness (white light output) will vary depending on usage conditions. Colour light output measured in accordance with IDMS 15:4; white light output measured in accordance with ISO 21118.

² Maximum speed and range is achievable when used with same enhanced mode technology. Actual data rates, features and performance may vary depending on your computer system, the environment and other factors.

³ When used in the general office environment (the amount of floating dust: 0.04 - 0.2 mg/m³). Based on the Epson's in-house test results.

EB-E01

Supplied Accessories
Power Cable (1.8m)
Remote control with 2AA Battery
User's Manual CDROM
Quick Start Guide

Optional Accessories
Spare Lamp: ELPLP97
Air Filter: ELPAF32
Ceiling Mount: ELPMB23
Carry Case: ELPKS69



EB-E01

©2021 Epson Singapore Pte Ltd. All Rights Reserved. Reproduction in part or in whole, without the written permission from Epson, is strictly prohibited.

EPSON and EXCEED YOUR VISION are registered trademarks of Seiko Epson Corporation.

All other product names and other company names used herein are for identification purposes only and are the trademarks or registered trademarks of their respective owners.

Epson disclaims any and all rights in those marks. Projected images shown herein are simulations. The actual product design and contents may vary. Specifications are subject to change without notice and may vary between countries. Please check with local Epson offices for more information.

Apple, iPad and iPhone are trademarks of Apple Inc., registered in the U.S. and other countries. App Store is a service mark of Apple Inc.

Android is a trademark of Google Inc.

Dealer's Stamp

Information correct at time of printing.
Printed February 2021

EPSON EXCEED YOUR VISION

SPECIFICATIONS EB-X51

MODEL NUMBER		EB-X51
Projection Technology		RGB liquid crystal shutter projection system (3LCD)
Specifications of Main Parts		
LCD	Size	0.55" (C2fine)
	Native Resolution	XGA (1024 x 768)
Lightsource	Type	210W UHE
	Life (Normal / Eco)	6,000 / 12,000 hours
Aspect Ratio		4:3
Projection Lens		
	Type	Optical Zoom (Manual) / Focus (Manual)
	F-Number	1.49 – 1.72
	Focal Length	16.90 – 20.28 mm
	Zoom Ratio	1 – 1.2 (Digital Zoom)
	Throw Ratio	1.48 – 1.77 (Wide to Tele)
Screen Size (Projected Distance)		
Standard		Tele: 30" to 300" [1.07 to 10.95 m] Wide: 30" to 300" [0.89 to 9.12 m]
Brightness¹		
White Light Output (Normal / Extended)		3,800 lm
Colour Light Output		3,800 lm
Contrast Ratio		16,000:1
Geometric Correction		
Vertical / Horizontal Keystone		±30° / ±30° (Auto Vertical Keystone only)
Quick Corner		Yes
Split Screen		Yes
Internal Speakers		Monoaural: 2W x 1
Connectivity		
Analog Input	D-Sub 15Pin	1
	Composite	1 (RCA)
Digital Input	DVI-D	NA
	HDMI	1
	HDBaseT	NA
Output Terminal	D-Sub 15Pin	NA
	HDMI	NA
Audio Input	2RCA	1
Audio Output	Stereo Mini Jack	NA
Others	USB Type A	1 (For Wireless LAN, Firmware Update, Copy OSD Settings)
	USB Type B	1 (For Firmware Update, Copy OSD Settings)
Control I/O	RS-232C	NA
	Remote Control Input	NA
Network	Wired LAN	NA
	Wireless	Optional (ELPAP11)
Wireless Specification		
Supported Speed For Each Mode		IEEE 802.11b (2.4GHz): 11 Mbps ² / IEEE 802.11g (2.4GHz): 54 Mbps ² / IEEE 802.11n (2.4GHz): 72.2 Mbps ² / IEEE 802.11a (5GHz): 54Mbps ² / IEEE 802.11n (5GHz): 150 Mbps ²
Wireless LAN Security		Infrastructure: OPEN, WPA2/WPA3-PSK Access Point: OPEN, WPA2-PSK (AES)
Operating Temperature		Low Altitude: 5 – 40 °C <41 – 104 °F> High Altitude: 5 – 35 °C <41 – 95 °F> (20% – 80% Humidity, No Condensation)
Operating Altitude		0 – 3,048 m <0 – 10,000 ft>
Direct Power On / Off		Yes
Start-Up Period		Up to 6 seconds, Warm-up Period: 30 seconds
Cool Down Period		Instant Off
Air Filter		
Type		High Efficiency Filter
Maintenance Cycle (Normal / Eco)		6,000 / 12,000 hours ²
Power Supply Voltage		100 - 240 V AC ±10%, 50/60 Hz
Power Consumption (220 - 240V)		
Lamp (Normal / Eco)		327W / 225W
Standby (Network / Energy Saving)		2.0W / 0.3 W
Dimension Excluding Feet (D X W X H)		234 x 302 x 77 mm
Weight (Including Standard Lens)		Approx. 2.5 kg
Fan Noise (Normal / Quiet)		37dB / 28dB

¹ Colour brightness (colour light output) and white brightness (white light output) will vary depending on usage conditions. Colour light output measured in accordance with IDMS 15:4; white light output measured in accordance with ISO 21118.

² Maximum speed and range is achievable when used with same enhanced mode technology. Actual data rates, features and performance may vary depending on your computer system, the environment and other factors.

³ When used in the general office environment (the amount of floating dust: 0.04 - 0.2 mg/m³). Based on the Epson's in-house test results.

EB-X51

Supplied Accessories
Power Cable (1.8m)
HDMI Cable (1.8m)
Remote control with 2AA Battery
User's Manual CDROM
Quick Start Guide

Optional Accessories
Spare Lamp: ELPLP97
Air Filter: ELPAF32
Wireless LAN Card + Cover: ELPAP11
Ceiling Mount: ELPMB23
Carry Case: ELPKS69



EB-X51

©2021 Epson Singapore Pte Ltd. All Rights Reserved. Reproduction in part or in whole, without the written permission from Epson, is strictly prohibited.

EPSON and EXCEED YOUR VISION are registered trademarks of Seiko Epson Corporation.

All other product names and other company names used herein are for identification purposes only and are the trademarks or registered trademarks of their respective owners.

Epson disclaims any and all rights in those marks. Projected images shown herein are simulations. The actual product design and contents may vary. Specifications are subject to change without notice and may vary between countries. Please check with local Epson offices for more information.

Apple, iPad and iPhone are trademarks of Apple Inc., registered in the U.S. and other countries. App Store is a service mark of Apple Inc.

Android is a trademark of Google Inc.

Dealer's Stamp

Information correct at time of printing.
Printed February 2021

Sales Enquiries
800 120 5564



For latest specifications, visit www.epson.com.sg/projectors or call +65 800 120 5564.

Epson Singapore Pte Ltd 438B Alexandra Road, Block B Alexandra Technopark, #04-01/04, Singapore 119968. Tel: (65) 6586-5500
Epson Customer Care Center 100G Pasir Panjang Road, #01-09 Interlocal Centre, Singapore 118523. Epson Helpdesk: 800 120 5564. Please refer to www.epson.com.sg/contact for opening hours.

Sales Enquiries
800 120 5564



For latest specifications, visit www.epson.com.sg/projectors or call +65 800 120 5564.

Epson Singapore Pte Ltd 438B Alexandra Road, Block B Alexandra Technopark, #04-01/04, Singapore 119968. Tel: (65) 6586-5500
Epson Customer Care Center 100G Pasir Panjang Road, #01-09 Interlocal Centre, Singapore 118523. Epson Helpdesk: 800 120 5564. Please refer to www.epson.com.sg/contact for opening hours.

SPECIFICATIONS EB-W51

MODEL NUMBER		EB-W51
Projection Technology		RGB liquid crystal shutter projection system (3LCD)
Specifications of Main Parts		
LCD	Size	0.59" (C2fine)
	Native Resolution	WXGA (1280 x 800)
	Lightsource	Type 210W UHE Life (Normal / Eco) 6,000 / 12,000 hours
Aspect Ratio	16:10	
Projection Lens		Type Optical Zoom (Manual) / Focus (Manual) F-Number 1.49 – 1.72 Focal Length 16.90 – 20.28 mm Zoom Ratio 1 – 1.2 Throw Ratio 1.30 – 1.56 (Wide to Tele)
Screen Size (Projected Distance)		
Standard		Tele: 33" to 320" [1.10 to 10.89 m] Wide: 33" to 320" [0.91 to 9.07 m]
Brightness¹		
White Light Output (Normal / Extended)		4,000 lm
Colour Light Output		4,000 lm
Contrast Ratio		16,000:1
Geometric Correction		
Vertical / Horizontal Keystone		±30° / ±30° (Auto Vertical Keystone only)
Quick Corner		Yes
Split Screen		Yes
Internal Speakers		Monoaural: 2W x 1
Connectivity		
Analog Input	D-Sub 15Pin	1
	Composite	1 (RCA)
Digital Input	DVI-D	NA
	HDMI	1
	HDBaseT	NA
Output Terminal	D-Sub 15Pin	NA
	HDMI	NA
Audio Input	2RCA (White & Red)	1
Audio Output	Stereo Mini Jack	NA
Others	USB Type A	1 (For Wireless LAN, Firmware Update, Copy OSD Settings)
	USB Type B	1 (For Firmware Update, Copy OSD Settings)
Control I/O	RS-232C	NA
	Remote Control Input	NA
Network	Wired LAN	NA
	Wireless	Optional (ELPAP11)
Wireless Specification		
Supported Speed For Each Mode		IEEE 802.11b (2.4GHz): 11 Mbps ² / IEEE 802.11g (2.4GHz): 54 Mbps ² / IEEE 802.11n (2.4GHz): 72.2 Mbps ² / IEEE 802.11a (5GHz): 54 Mbps ² / IEEE 802.11n (5GHz): 150 Mbps ²
Wireless LAN Security		Infrastructure: OPEN, WPA2/WPA3-PSK Access Point: OPEN, WPA2-PSK (AES)
Operating Temperature		
Low Altitude: 5 – 40 °C <41 – 104 °F> High Altitude: 5 – 35 °C <41 – 95 °F> (20% – 80% Humidity, No Condensation)		
Operating Altitude		
0 – 3,048 m <0 – 10,000 ft>		
Direct Power On / Off		
Yes		
Start-Up Period		
Up to 6 seconds, Warm-up Period: 30 seconds		
Cool Down Period		
Instant Off		
Air Filter		
Type	High Efficiency Filter	
Maintenance Cycle (Normal / Eco)	6,000 / 12,000 hours ³	
Power Supply Voltage		
100 – 240 V AC ±10%, 50/60 Hz		
Power Consumption (220 - 240V)		
Lamp (Normal / Eco)	327W / 225W	
Standby (Network / Energy Saving)	2.0W / 0.3W	
Dimension Excluding Feet (D X W X H)		
234 x 302 x 77 mm		
Weight (Including Standard Lens)		
Approx. 2.5 kg		
Fan Noise (Normal / Quiet)		
37dB / 28dB		

¹ Colour brightness (colour light output) and white brightness (white light output) will vary depending on usage conditions. Colour light output measured in accordance with IDMS 15:4; white light output measured in accordance with ISO 21118.

² Maximum speed and range is achievable when used with same enhanced mode technology. Actual data rates, features and performance may vary depending on your computer system, the environment and other factors.

³ When used in the general office environment (the amount of floating dust: 0.04 - 0.2 mg/m³). Based on the Epson's in-house test results.

EB-W51

Supplied Accessories

Power Cable (1.8m)
HDMI Cable (1.8m)
Remote control with 2AA Battery
User's Manual CDROM
Quick Start Guide

Optional Accessories

Spare Lamp: ELPLP97
Air Filter: ELPAF32
Wireless LAN Card + Cover: ELPAP11
Ceiling Mount: ELPMB23
Carry Case: ELPKS69



EB-W06

©2021 Epson Singapore Pte Ltd. All Rights Reserved. Reproduction in part or in whole, without the written permission from Epson, is strictly prohibited.

EPSON and EXCEED YOUR VISION are registered trademarks of Seiko Epson Corporation.

All other product names and other company names used herein are for identification purposes only and are the trademarks or registered trademarks of their respective owners.

Epson disclaims any and all rights in those marks. Projected images shown herein are simulations. The actual product design and contents may vary. Specifications are subject to change without notice and may vary between countries. Please check with local Epson offices for more information.

Apple, iPad and iPhone are trademarks of Apple Inc., registered in the U.S. and other countries. App Store is a service mark of Apple Inc.

Android is a trademark of Google Inc.

Dealer's Stamp

Information correct at time of printing.
Printed February 2021

EPSON EXCEED YOUR VISION

SPECIFICATIONS EB-FH52

MODEL NUMBER		EB-FH52
Projection Technology		RGB liquid crystal shutter projection system (3LCD)
Specifications of Main Parts		
LCD	Size	0.61" (C2fine)
	Native Resolution	1080p
	Lightsource	Type 230W UHE Life (Normal / Eco) 5,500 / 12,000 hours
Aspect Ratio	16:9	
Projection Lens		Type Optical Zoom (Manual) / Focus (Manual) F-Number 1.51 – 1.99 Focal Length 18.20 – 29.20 mm Zoom Ratio 1 – 1.6 Throw Ratio 1.32 – 2.14 (Wide to Tele)
Screen Size (Projected Distance)		
Standard		Tele: 30" to 300" [1.42 to 14.41 m] Wide: 30" to 300" [0.87 to 8.88 m]
Brightness¹		
White Light Output (Normal / Extended)		4,000 lm
Colour Light Output		4,000 lm
Contrast Ratio		16,000:1
Geometric Correction		
Vertical / Horizontal Keystone		±30° / ±30° (Auto Vertical Keystone only)
Quick Corner		Yes
Split Screen		Yes
Internal Speakers		Monoaural: 16W x 1
Connectivity		
Analog Input	D-Sub 15Pin	1
	Composite	1 (RCA)
Digital Input	DVI-D	NA
	HDMI	2
	HDBaseT	NA
Output Terminal	D-Sub 15Pin	NA
	HDMI	NA
Audio Input	2RCA (White & Red)	1
Audio Output	Stereo Mini Jack	NA
Others	USB Type A	1 (For Wireless LAN, Firmware Update, Copy OSD Settings)
	USB Type B	1 (For Firmware Update, Copy OSD Settings)
Control I/O	RS-232C	NA
	Remote Control Input	NA
Network	Wired LAN	NA
	Wireless	Built-In
Wireless Specification (Screen Mirroring)		
Supported Speed For Each Mode		IEEE 802.11g (2.4GHz): 54Mbps ² / IEEE 802.11n (2.4GHz): 130 Mbps ² / IEEE 802.11a (5GHz): 54 Mbps ² / IEEE 802.11n (5GHz): 270 Mbps ² / IEEE 802.11ac (5 GHz): 780 Mbps ²
Wireless Specification (Built-in Wireless LAN)		
Supported Speed For Each Mode		IEEE 802.11b (2.4GHz): 11Mbps ² / IEEE 802.11g (2.4GHz): 54 Mbps ² / IEEE 802.11n (2.4GHz): 72.2 Mbps ² / IEEE 802.11a (5GHz): 54 Mbps ² / IEEE 802.11n (5 GHz): 150 Mbps ²
Wireless LAN Security		Quick Mode: OPEN, WPA2-PSK (AES) Advanced Mode: OPEN, WPA2/WPA3-PSK, WPA2/WPA3-EAP Supported EAP Type: PEAP, PEAP-TLS, EAP-TLS, EAP-Fast
Low Altitude: 5 – 40 °C <41 – 104 °F> High Altitude: 5 – 35 °C <41 – 95 °F> (20% – 80% Humidity, No Condensation)		
Operating Temperature		
0 – 3,048 m <0 – 10,000 ft>		
Operating Altitude		
Yes		
Start-Up Period		
Up to 6 seconds, Warm-up Period: 30 seconds		
Cool Down Period		
Instant Off		
Air Filter		
Type	High Efficiency Filter	
Maintenance Cycle (Normal / Eco)	10,000 / 20,000 hours ³	
Power Supply Voltage		
100 – 240 V AC ±10%, 50/60 Hz		
Power Consumption (220 - 240V)		
Lamp (Normal / Eco)	327W / 225W	
Standby (Network / Energy Saving)	2.0W / 0.3W	
Dimension Excluding Feet (D X W X H)		
282 x 309 x 90 mm		
Weight (Including Standard Lens)		
Approx. 3.1 kg		
Fan Noise (Normal / Quiet)		
37dB / 28dB		

¹ Colour brightness (colour light output) and white brightness (white light output) will vary depending on usage conditions. Colour light output measured in accordance with IDMS 15:4; white light output measured in accordance with ISO 21118.

² Maximum speed and range is achievable when used with same enhanced mode technology. Actual data rates, features and performance may vary depending on your computer system, the environment and other factors.

³ When used in the general office environment (the amount of floating dust: 0.04 - 0.2 mg/m³). Based on the Epson's in-house test results.

EB-FH52

Supplied Accessories

Power Cable (1.8m)
HDMI Cable (1.8m)
Remote control with 2AA Battery
ELPAP11 Wireless Lan (Built-In)
User's Manual CDROM
Quick Start Guide

Optional Accessories

Spare Lamp: ELPLP97
Air Filter: ELPAF54
Ceiling Mount: ELPMB23
Carry Case: ELPKS70



EB-FH52

©2021 Epson Singapore Pte Ltd. All Rights Reserved. Reproduction in part or in whole, without the written permission from Epson, is strictly prohibited.

EPSON and EXCEED YOUR VISION are registered trademarks of Seiko Epson Corporation.

All other product names and other company names used herein are for identification purposes only and are the trademarks or registered trademarks of their respective owners.

Epson disclaims any and all rights in those marks. Projected images shown herein are simulations. The actual product design and contents may vary. Specifications are subject to change without notice and may vary between countries. Please check with local Epson offices for more information.

Apple, iPad and iPhone are trademarks of Apple Inc., registered in the U.S. and other countries. App Store is a service mark of Apple Inc.

Android is a trademark of Google Inc.

Dealer's Stamp

Information correct at time of printing.
Printed February 2021

Sales Enquiries
800 120 5564

epsonsg EpsonSingapore EpsonSoutheastAsia Epson Singapore

For latest specifications, visit www.epson.com.sg/projectors or call +65 800 120 5564.

Epson Singapore Pte Ltd 438B Alexandra Road, Block B Alexandra Technopark, #04-01/04, Singapore 119968. Tel: (65) 6586-5500
Epson Customer Care Center 100G Pasir Panjang Road, #01-09 Interlocal Centre, Singapore 118523. Epson Helpdesk: 800 120 5564. Please refer to www.epson.com.sg/contact for opening hours.

Sales Enquiries
800 120 5564

epsonsg EpsonSingapore EpsonSoutheastAsia Epson Singapore

For latest specifications, visit www.epson.com.sg/projectors or call +65 800 120 5564.

Epson Singapore Pte Ltd 438B Alexandra Road, Block B Alexandra Technopark, #04-01/04, Singapore 119968. Tel: (65) 6586-5500
Epson Customer Care Center 100G Pasir Panjang Road, #01-09 Interlocal Centre, Singapore 118523. Epson Helpdesk: 800 120 5564. Please refer to www.epson.com.sg/contact for opening hours.